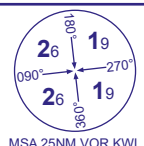


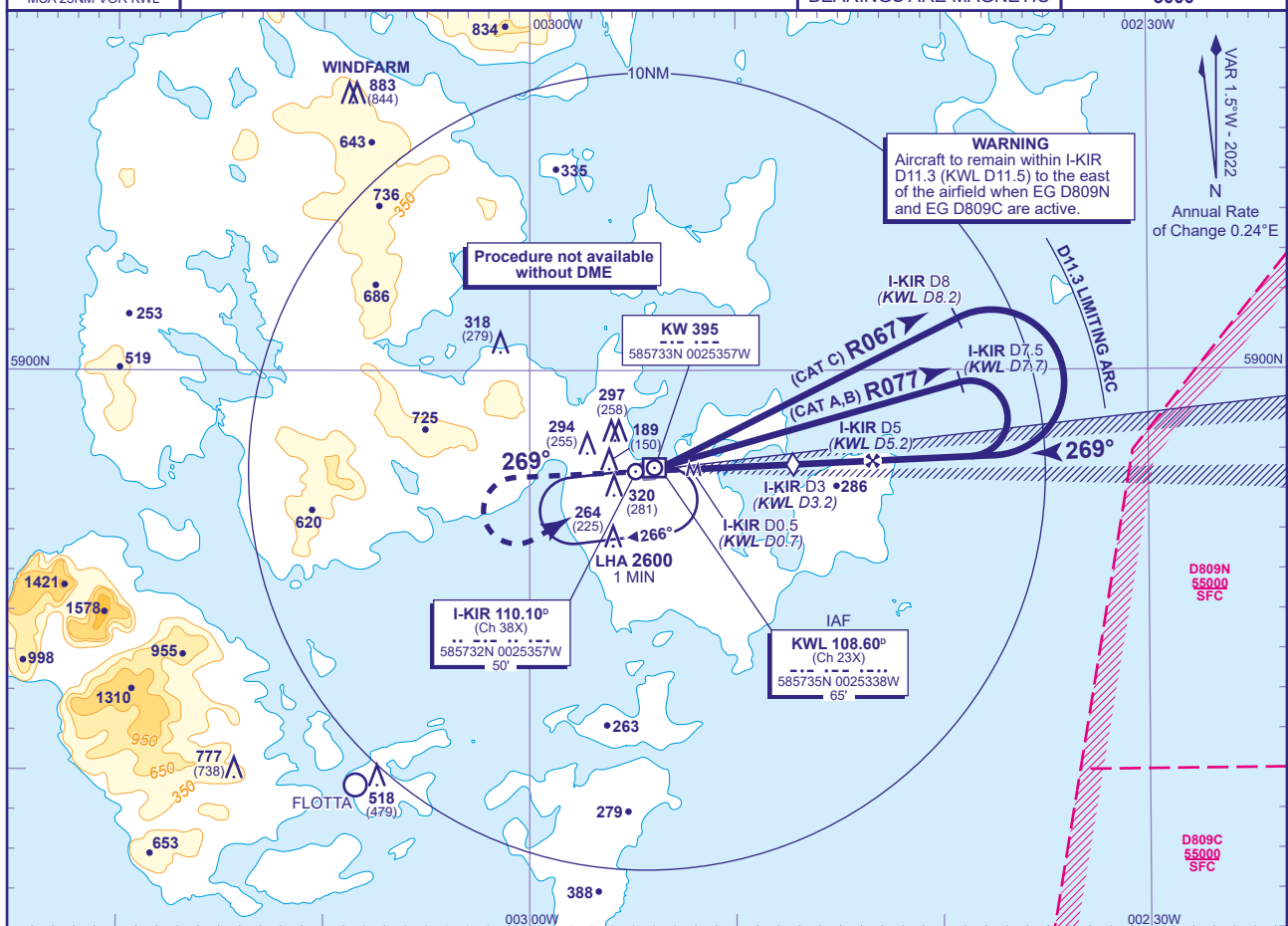
INSTRUMENT APPROACH CHART - ICAO

KIRKWALL
LOC/DME/VOR
RWY 27
(ACFT CAT A,B,C)



APP	118.305	KIRKWALL APPROACH	AD ELEVATION	58
TWR	118.305	KIRKWALL TOWER	THR ELEVATION	39
AFIS	118.305	KIRKWALL INFORMATION	OBSTACLE ELEVATION	883 AMSL (844) (ABOVE THR)
ATIS	108.600	KIRKWALL INFORMATION	BEARINGS ARE MAGNETIC	

TRANSITION ALTITUDE
3000



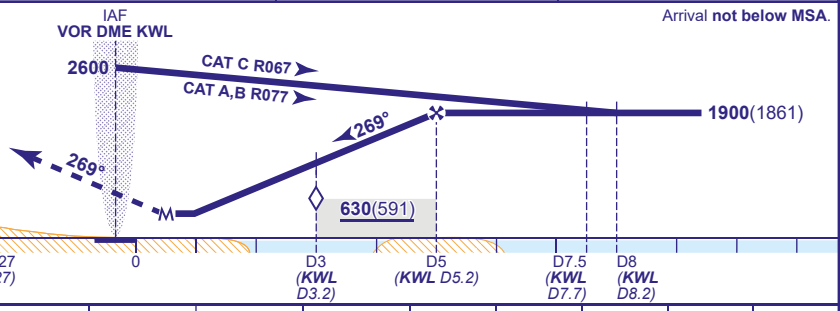
RECOMMENDED PROFILE Gradient 6.1%, 370FT/NM

DME I-KIR(KWL)	4(4.2)	3(3.2) (SDF)	2(2.2)	1(1.2)
ALT(HGT)	1540(1501)	1170(1131)	810(771)	440(401)

Arrival not below MSA.

MAPt I-KIR DME 0.5
(KWL DME 0.7)

Climb straight ahead. At **2000** or, **I-KIR DME 3 (KWL DME 3.5)** whichever is later, climbing turn left to return to **VOR KWL** at **2600** or as directed.



Aircraft Category		A	B	C	Rate of descent	G/S KT	160	140	120	100	80
OCA (OCH)	Procedure	380(341)	380(341)	380(341)		FT/MIN	990	870	740	620	500
VM(C)OCA (OCH AAL)	Total Area	650(592)	660(602)	1250(1192)							
	South of RWY 09/27	650(592)	660(602)	760(702)							

NOTE NDB KW may be used in lieu of VOR KWL.

CHANGE (8/21): I-KIR DME ELEVATION. MAG VAR. MAG TRACKS. OBSTACLES.